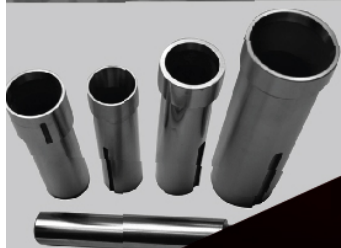




ALPHA TECHNOLOGY AND SUPPLIES COMPANY LIMITED

MANUFACTURER OF WORK
AND TOOL HOLDING PRODUCTS



ALPHA TECHNOLOGY AND SUPPLIES COMPANY LIMITED

OUR CORPORATE MISSION

AT ATS, OUR CORPORATE MISSION IS TO REDUCE YOUR MACHINE'S DOWN-TIME BY OFFERING QUALITY PRODUCTS AT COMPETITIVE PRICES. AND WITHIN OUR PRODUCTION FRAMEWORK, WE ENFORCE A POLICY OF STRICT SELECTION OF MATERIALS AND FINISHING PROCESSES.

ENGINEERED TO PERFECTION

NOT ONLY ARE OUR FINISHED PRODUCTS DURABLE, THEY SURPASSED THE ACCURACY REQUIREMENTS OF MANY INSTITUTE OF STABDARDS. WE ARE NOW ABLE TO OFFER OUR NEWLY DEVELOPED, HIGH PRECISION PRODUCTS (FEED FINGERS, SPRING COLLETS, GUIDE BUSHES ETC) TO BE USED ON NC AUTOMATICS, CONVENTIONAL CAM LATHE AND OTHER VARIOUS TYPES OF DEDICATED MACHINERIES.



**ALPHA TECHNOLOGY
AND SUPPLIES
COMPANY LIMITED**

BESIDES OUR STANDARD RANGE OF COLLETS & GUIDE BUSHES, AT ATS WE ALSO OFFERS A WIDE RANGE OF WORK HOLDING PRODUCTS AND ACCESSORIES FOR SWISS-TYPE LATHES.

OUR STANDARD RANGE FOR
VARIOUS MACHINE MAKERS
THE HEART FOR BETTER PERFORMANCE.



ADAPTER



ADAPTER



CITIZEN



CITIZEN



CITIZEN



CITIZEN



DIAPHRAGM JAWS



CNC COLLET



DRILL & TAP HOLDERS



DRILL & TAP HOLDERS



DRILL COLLETS



DRILL & TAP HOLDERS



ER COLLETS



EGURO



EGURO



ER COLLETS

QUALITY
ASSURANCE.

FINGER CHUCK



FINGER CHUCK



RIKEN



MIYANO



HL COLLET



MIYANO



HANHUA



ROTATIG SHAFT



STAR



STAR



STAR



STAR



TOGGLES



TOGGLES



TOGGLES



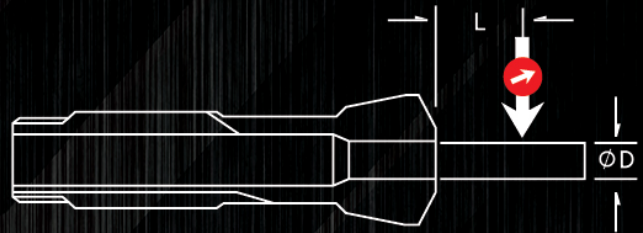
TSUGAMI



SLEEVE FOR VARIOUS
MACHINE MODELS

ACCURACY CHART

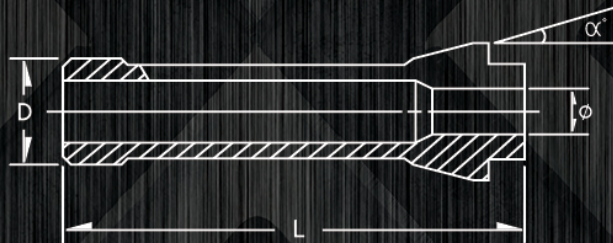
THE TOLERANCE IS TO BE MEASURED BY A DIAL-INDICATOR WITH A MEASURING BAR INSERTED IN THE CHUCK.



COMPARISON TABLE : TOLERANCE

D	L	JIS	ATS
2-3	8	0.01	0.005
3-6	10	0.01	0.005
6-10	20	0.01	0.005
10-20	30	0.015	0.008

(L LESS THAN 5, T.I.R IS 0.003 OR BELOW)



CITIZEN

MODEL	D	L	α	MAX ϕ
F10, L10, D10, G10	15	45.5	15°	20.0
B12, F12	16	62.0	16°	12.7
L16, F16, G16, E16, E16, M16	26	67	15°	16.0
L20, F20, E20	26	67	15°	20.0
L25, F25, E25	30	78	16°	25.0
BL12	19.05	77.2	15°	13.0
BL16	22	81	15°	16.0
BL20	33	100	15°	20.0

STAR

MODEL	D	L	α	MAX ϕ
JNC10, SNC10, RNC16	15	64	16°	10.0
SH12, VNC12, SNC15, SJ15	18	67	15°	14.0
SE16, SH16, RNC16, SR16, SA16	20	67	16°	16.0
JNC20, SR20, VNC20	26	67	15°	20.0
JNC32, JNC25, KNC25, KNC32	37	92	15°	32.0

TSUGAML

MODEL	D	L	α	MAX ϕ
T7	10	47	20°	7.0
NT17, NP17	23.8	62	15°	7.0
NT16, NP16, NP12	23.8	62	15°	17.0
BO12, BS12	20	67	14°	12.0
BO18, BS18, S20	28	77	15°	20.0

NOMURA

MODEL	D	L	α	MAX ϕ
NS-P1053, NW-10K	16	53	15°	10.0
NS-P1653, NS-P1253, WN-16K	20	67	15°	16.0

RIKEN

MODEL	D	L	α	MAX ϕ
SAD 25	30	66	15°	30.0
SAD 40	48	84	15°	40.0

MIYANO

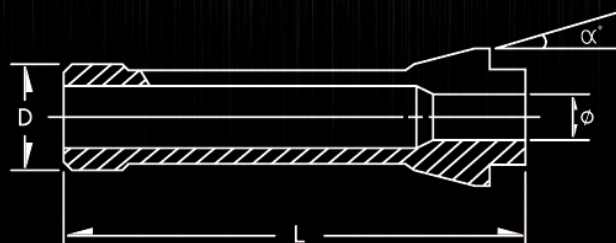
MODEL	D	L	α	MAX ϕ
BNC34 (171E)	42	94	15°	32.0
BNC42 (173E)	48	94	15°	38.0
BN7-16 (148E)	28	70	15°	20.0
147 E	27	73.5	15°	19.0
140 E	22	55	15°	14.0
176 E	56	94	15°	48.0

STROHM

MODEL	D	L	α	MAX ϕ
M125, M105	15	64	16°	12.7

TORNOS

MODEL	D	L	α	MAX ϕ
M7, MS7	10	47.5	20°	7.0
R10, M10	13	64	16°	10.0
R16	20	67	16°	16.0
DECO 2000-7	13	64	16°	7.0
DECO 2000-10	13	64	16°	10.0
DECO 2000-13/16 ENC 162	20	54	15°	13.0
DECO 2000-20 ENC 163	25	77	16°	20.0



COLLET CHUCK



GUIDE BUSH

CITIZEN

MODEL	D	L	α	MAX ϕ
F10, L10, D10, G10	16	50	16°	10.0
B12, F12	18	60	30°	12.7
L16, F16, G16, E16, M16	30	59	16°	16.0
L20, F20, E20, B20	30	59	16°	20.0
L25, F25, E25	34	87.5	10°	25.0

STAR

MODEL	D	L	α	MAX ϕ
JNC10, SNC10, RNC10	16	59	16°	10.0
SH12, VNC12, SNC15, SJ15	21	57.5	30°	15.0
SE16, SH16, RNC16, SR16, SA16	22	68	16°	16.0
JNC20, KNC20, SR20, VNC20	30	59	16°	20.0
JNC25	CHECK ON ISAAA SAMPLE			

STAR

MODEL	D	L	α	MAX ϕ
JNC10, SNC10, RNC10	16	59	16°	10.0
SH12, VNC12, SNC15, SJ15	21	57.5	30°	15.0
SE16, SH16, RNC16, SR16, SA16	22	68	16°	16.0
JNC20, KNC20, SR20, VNC20	30	59	16°	20.0
JNC25	CHECK ON ISAAA SAMPLE			

TSUGAMI

MODEL	D	L	α	MAX ϕ
T7	11	52	16°	7.0
NT17, NP17	23	72	16°	17.0
NT16, NP16	23	72	16°	17.0
B012, BS12	22	70.5	16°	12.0
B018, BS18, S20	30	70	16°	20.0
BM16	30	75	15°	16.0

NOMURA

MODEL	D	L	α	MAX ϕ
NS-P1052, NW-10K	16	63	16°	10.0
NS-P1253, NS-P1653, NW-16K	22	70.5	16°	11.0

STROHM

MODEL	D	L	α	MAX ϕ
M125, M105	18	60	30°	12.7

TORNOS

MODEL	D	L	α	MAX ϕ
M7, MS7	13	68	30°	7.0
R10, M10	16	59	16°	10.0
R16	22	68	16°	16.0
DECO 2007-7	16	59	16°	7.0
DECOO 2000-10	16	59	16°	10.0
DECO 2000-13/16 ENC 162	24	61	30°	16.0
DECO 2000-20 ENC 163	28	81	30°	20.0





ALPHA TECHNOLOGY AND SUPPLIES CO., LTD.

📍 48/455 MOO 4 KHLONG SAM, KHLONG LUANG, PATHUM THANI 12120

☎ 02-020-1072 📠 080-987-2600

✉ YUPHA@ATS-TH.COM 🌐 WWW.ATS-TH.COM